



5 Bed  
House  
located in Barford

£304,000



**DIRECTIONS**

**CONTACT**

12 High Street  
Warwick  
Warwickshire  
CV34 4AP

E: sales@margetts.co.uk  
T: 01926 496262  
www.margetts.co.uk



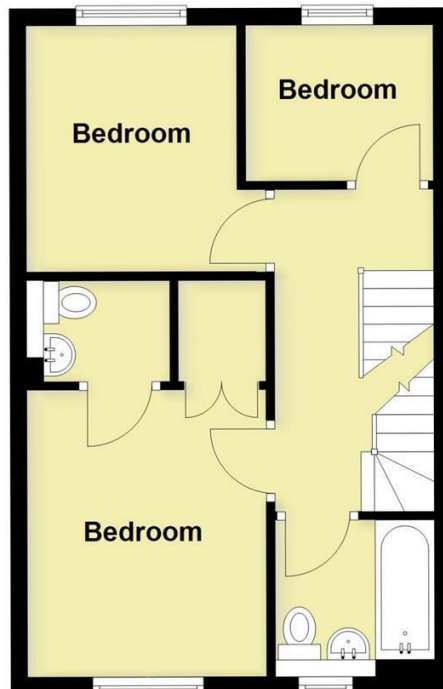
**Ground Floor**

Approx. 37.0 sq. metres (398.7 sq. feet)



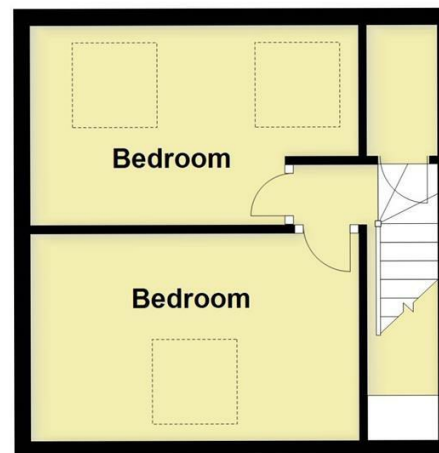
**First Floor**

Approx. 37.3 sq. metres (401.6 sq. feet)



**Second Floor**

Approx. 23.6 sq. metres (254.0 sq. feet)



Total area: approx. 97.9 sq. metres (1054.2 sq. feet)

This plan is for illustration purposes only and should not be relied upon as a statement of fact

| Energy Efficiency Rating                    |  | Current                 | Potential |
|---|--|-------------------------|-----------|
| Very energy efficient - lower running costs |  |                         |           |
| (92 plus) <b>A</b>                          |  |                         | 90        |
| (81-91) <b>B</b>                            |  |                         |           |
| (69-80) <b>C</b>                            |  | 77                      |           |
| (55-68) <b>D</b>                            |  |                         |           |
| (39-54) <b>E</b>                            |  |                         |           |
| (21-38) <b>F</b>                            |  |                         |           |
| (1-20) <b>G</b>                             |  |                         |           |
| Not energy efficient - higher running costs |  |                         |           |
| England & Wales                             |  | EU Directive 2002/91/EC |           |